

**Zone 1**  
FOR THE PROPER OPERATION OF THE HEATING SYSTEM, ALLOW AIR RENEWAL RATE 10 m<sup>3</sup>/h PER KW INSTALLED : **685 m<sup>3</sup>/h**

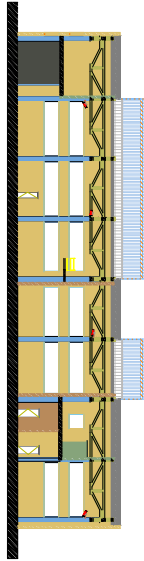
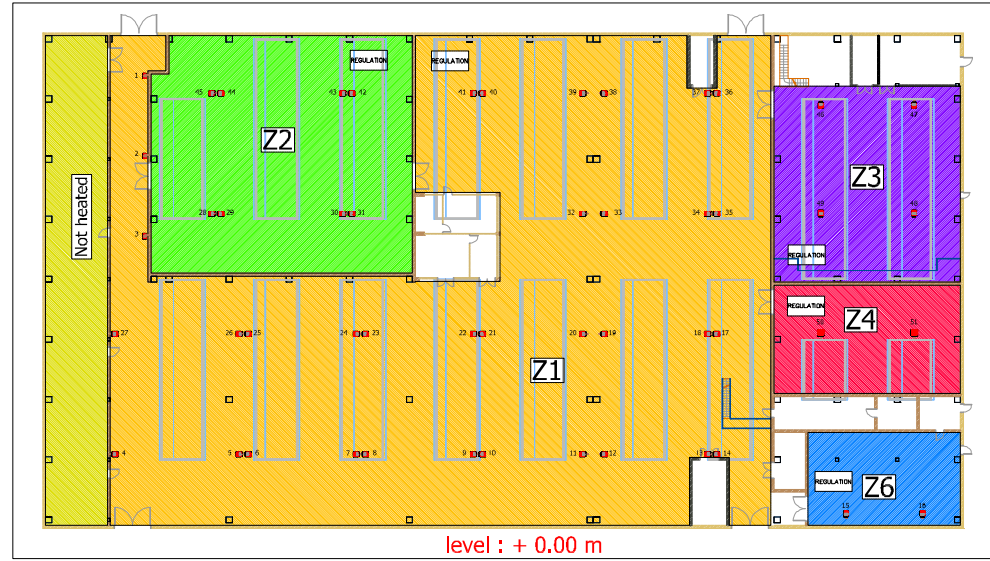
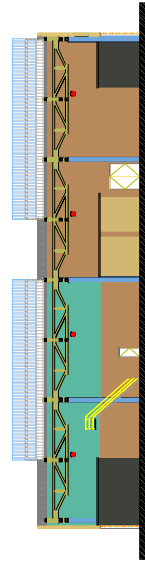
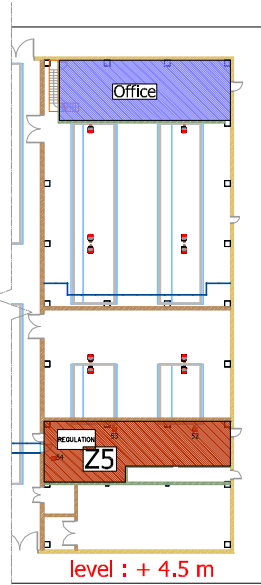
**Zone 2**  
FOR THE PROPER OPERATION OF THE HEATING SYSTEM, ALLOW AIR RENEWAL RATE 10 m<sup>3</sup>/h PER KW INSTALLED : **1820 m<sup>3</sup>/h**

**Zone 3**  
FOR THE PROPER OPERATION OF THE HEATING SYSTEM, ALLOW AIR RENEWAL RATE 10 m<sup>3</sup>/h PER KW INSTALLED : **810 m<sup>3</sup>/h**

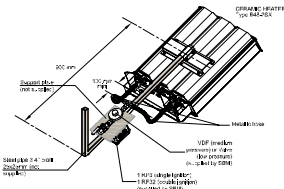
**Zone 4**  
FOR THE PROPER OPERATION OF THE HEATING SYSTEM, ALLOW AIR RENEWAL RATE 10 m<sup>3</sup>/h PER KW INSTALLED : **640 m<sup>3</sup>/h**

**Zone 5**  
FOR THE PROPER OPERATION OF THE HEATING SYSTEM, ALLOW AIR RENEWAL RATE 10 m<sup>3</sup>/h PER KW INSTALLED : **228 m<sup>3</sup>/h**

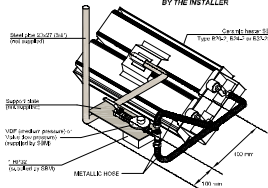
**Zone 6**  
FOR THE PROPER OPERATION OF THE HEATING SYSTEM, ALLOW AIR RENEWAL RATE 10 m<sup>3</sup>/h PER KW INSTALLED : **405 m<sup>3</sup>/h**



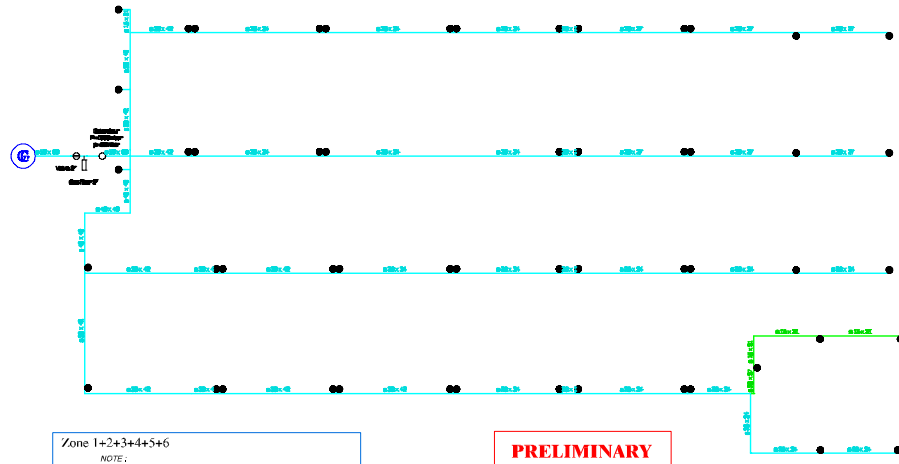
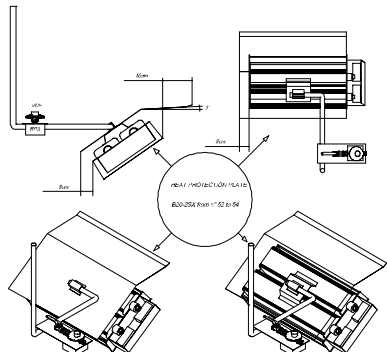
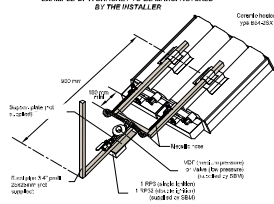
EXAMPLE OF A BRACKET TO BE MANUFACTURED BY THE INSTALLER



EXAMPLE OF A BRACKET TO BE MANUFACTURED BY THE INSTALLER



EXAMPLE OF A BRACKET TO BE MANUFACTURED BY THE INSTALLER



Zone 1+2+3+4+5+6  
NOTE:  
THE COMFORT TEMPERATURE IS GUARANTEED ONLY IF THE TOTAL SURFACE AREA IS HEATED

**PRELIMINARY PROJECT**



INDEX	DATE	REVISION

SOCIETE BOUROU JEUNONNE DE MECANIQUE



SBM 2100 GUDRY  
N° : 018 318 74 74 M  
FAX : 018 318 74 74 M

SURVEY N°

HEATING BY CERAMIC HEATERS WITH THERMOSTATIC REGULATION  
GAS : G20  
CAPACITY INSTALLED (KW) : 1048.8 kW COMFORT TEMPERATURE : +18°C to +17°C  
GAS HEAT PRESSURE AT HEATER : 30 mbar POWER SUPPLY : 230V single phase (Cable and wiring to be checked)  
DELIVERY PRESSURE AT POINT : 1 bar  
AIR RENEWAL RATE (VOLUME/HOUR) : 0.6 Vol/h  
SCALE : 1/200 DATE : 09/12/2011 DRAWN BY : O.BEUN